

WHERE THE OUTDOORS COME IN

1200 6TH AVENUE · SEATTLE, WA 98101

OFFICE SPACE FOR LEASE



PARKPLACESEATTLE.COM



PARK PLACE

SETTING THE STANDARD

BUILDING HIGHLIGHTS



10' WINDOW LINES AMAZING SETBACKS & VIEWS



SECURE, HIGH-CAPACITY BIKE STORAGE



BUILDING CONFERENCE ROOM



DEDICATED FITNESS CENTER



CHILDCARE ON-SITE

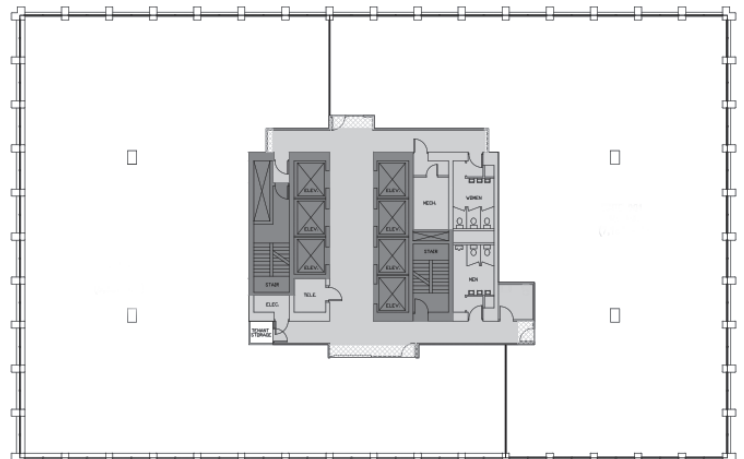


SECURITY ON-SITE

315,911 SF 21 STORIES

Fully renovated in 2012 by world renowned Gensler Architects, Park Place is a Class A office building with flexible floor plates, upgraded and efficient building systems, excellent parking, and stunning views of Mount Rainier and the Puget Sound. Uniquely positioned within the Central Business District and nestled against 3-acre Freeway Park, Park Place is truly an urban escape.

REPRESENTATIVE FLOOR PLAN ±15,734 SF





FOR SUSTAINABILITY

A FORCE OF NATURE

Park Place was the first building in Seattle to receive the prestigious LEED-EB Platinum designation.



**GREEN
ROOF**



**RAIN
CATCHMENT
SYSTEM**



**GREEN
CLEANING
PROGRAM**



**SYSTEMS
TO MEASURE
AIR FLOW**



**WATER-EFFICIENT
FIXTURES**



**SATELLITE-
CONTROLLED
IRRIGATION**

